

**St. Andrew's School  
Sample Examination  
Computer Studies**

**Ms Mary Shin  
Mrs Karen Chin  
Mr. Jonathan Manzano**

**SECTION A**

1 Part of the Central Processing Unit where calculations are done, comparisons are made, and important processing operations are performed.

- a) Control Unit  
b) Arithmetic and Logic Unit  
c) Memory Unit  
d) Input Unit

2 What fraction of a second is equivalent to a nanosecond?

- a) 1/100  
b) 1/1000.  
c) 1/1000000  
d) 1/1000000000

3 How many pair of wires does a UTP (Unshielded Twisted Pair) cable have?

- a) 2  
b) 3  
c) 4  
d) 8

4 [www.espn.com](http://www.espn.com) is an example of

- a) Web Address  
b) Web Site  
c) URL  
d) All of the above

5 Which Internet service allows the user to buy goods in the internet?

- a) Teleconferencing  
b) Email  
c) E-commerce  
d) Telebanking

6 What element of the Font is known as font type?

- a) Font Style  
b) Point Size  
c) Typeface  
d) Font Name

7 It refers to the way the text lines of a paragraph are arranged.

- a) Left Alignment  
b) Right Alignment  
c) Center  
d) Justification

8 It is the smallest piece of information a computer can handle.

- a) Bit  
b) Byte  
c) Character  
d) Number

9 What is the space between the text and the margin?

- a) Alignment
- b) Indent
- c) Justification
- d) Formatting

10 It is also known as permanent storage.

- a) Main memory
- b) Buffer
- c) Primary Storage
- d) Secondary Storage

## SECTION B

1 What do the following acronyms stand for?

i) URL: \_\_\_\_\_

ii) MODEM: \_\_\_\_\_

2 Give two advantages of e-mail to conventional mail:

i) \_\_\_\_\_

ii) \_\_\_\_\_

3 Give the meanings of the following terms:

i) Web Browser: \_\_\_\_\_

ii) Netiquette: \_\_\_\_\_

4 Give two advantages of network:

i) \_\_\_\_\_

ii) \_\_\_\_\_

5 What is the difference between Internet and Intranet?

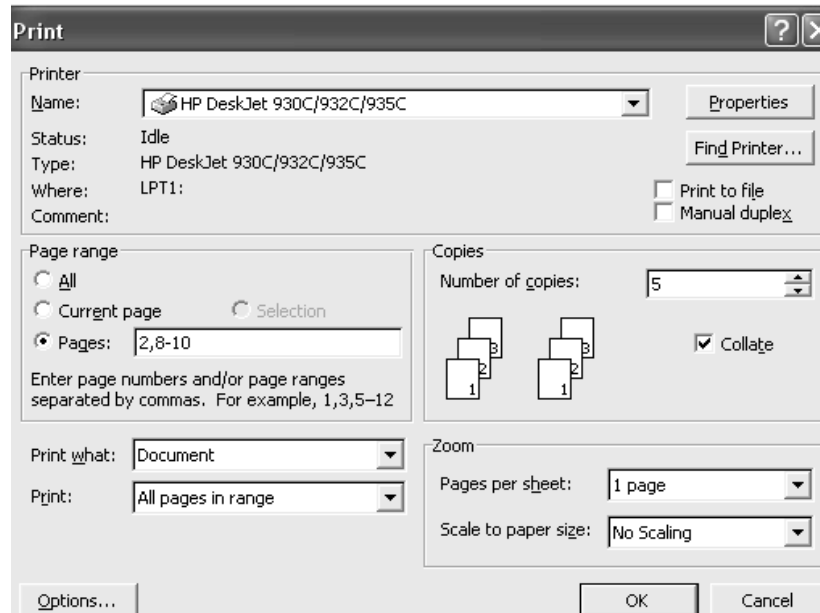
i) \_\_\_\_\_

ii) \_\_\_\_\_

## SECTION C

### Structure Question

- 1) Jin Shan wants to print some pages of a word processing document. He sets the computer to print as shown.



- a) If Jin Shan clicks on OK, how many pages will be printed?

\_\_\_\_\_ [1]

- b) To print the document in Black and White which options should be used?

\_\_\_\_\_ [1]

- c) In the print box, the collate button has been selected. What does this mean?

\_\_\_\_\_  
\_\_\_\_\_  
\_\_\_\_\_ [1]

- d) What are the options in the Print Options.

\_\_\_\_\_  
\_\_\_\_\_  
\_\_\_\_\_ [3]

- e) Jin Shan was working on a document containing tables. In order to add a few more columns he changes the page orientation. Which commands did he use?

---

---

[2]